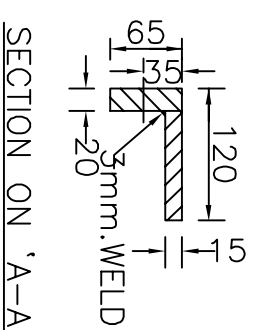
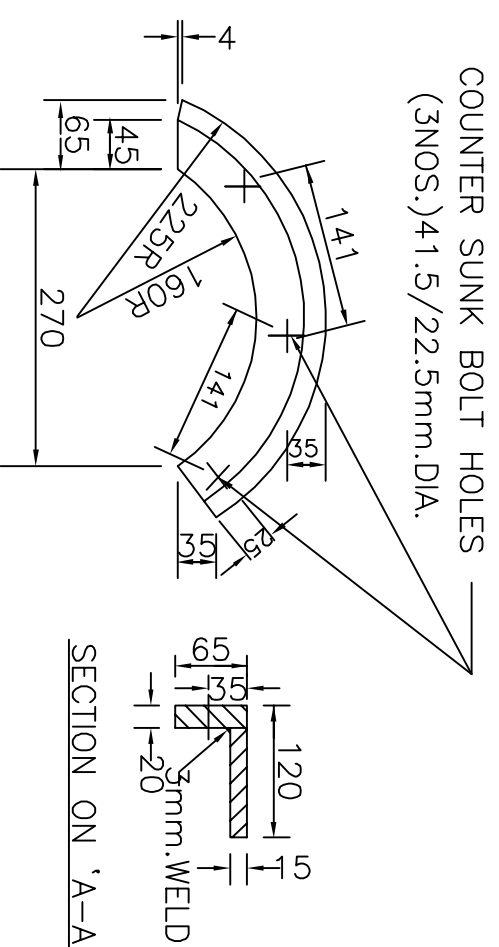
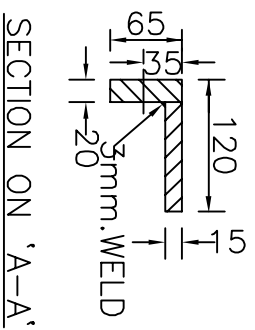
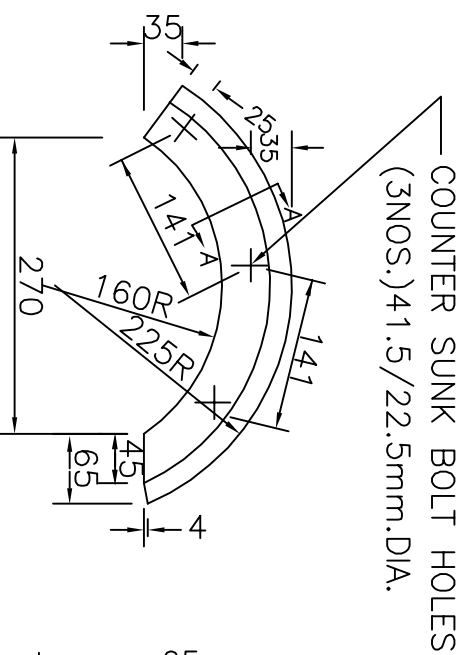


① WEAR PLATE(64. 08. 1455)
(ASCENDING SIDE)

② WEAR PLATE(64. 08. 1212)
(ASCENDING & DESCENDING SIDE)

③ WEAR PLATE(62. 08. 1222)
(DESCENDING SIDE)



④ WEAR PLATE(64. 08. 1333)
(ASCENDING SIDE BOTTOM)

⑤ WEAR PLATE(64. 08. 1335)
(DESCENDING SIDE BOTTOM)

5. LOCATION, NOS AND DIA OF COUNTER SUNK HOLE MAY DIFFER FROM M/C TO M/C . EXACT LOCATION AND DIA MAY BE ENSURED BEFORE PLACING THE ORDER FOR MANUFACTURING.
4. TOLERANCES MAY BE INDICATED INDIVIDUALLY UPON SUITABILITY OF FITMENTS.
3. HEAT TREATMENT: OIL HARDENED AND TEMPERED.
2. MATERIAL COMPOSITION AND OTHER DETAILS REFER TO RDSO SPECIFICATION NO. TM/HM/6/15 REV-2(2015)
1. ALL DIMENSIONS ARE IN MILLIMETERS.

RDSO SPECIFICATION NO

TM/HM/6/15
REV-2 (2015)

$$\mathbb{R}_+ \times \mathbb{D}_+ \times \mathbb{S}_+ \times \mathbb{O}_+$$

WEAR PLATE FOR

BALLAST CLEANING MACHINE

(PROVISIONAL)

CANCLD./SUPSED.
REV. REV-1(2015)

DRG.NO. TM/9415/8 REV-1

NOTES

SPECIFICATIONS

SCALE

ALT.	
------	--

DESCRIPTION

AUTHY.